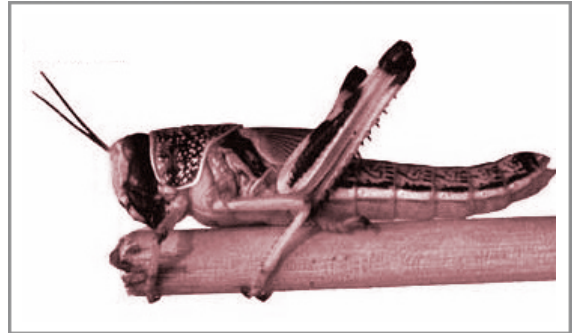


C is for Cottage

Assignment 30

Dictation

Teachers should review the following before beginning the dictation: 1) the silent *sion* words 2) *tch* words 3) direct and indirect quotations



EXERCISE A

1. Bill said, "I like your sketch of the kitchen."
2. John said he switched glasses because his vision was bad.
3. The boss asked them to dig the ditch deeper.
4. "Books are Jane's passion," she said.
5. Bob got permission to light the match.

EXERCISE B

1. What occasioned the explosion?
2. We asked Tim why he had such a sad expression on his face.
3. "There's no confusion," he said, "about what plane to catch."
4. The roof was made of thatch.
5. His decision to go was hard.

Reading, Phonics and Grammar

Complete all of the material found in **Lesson 30**.

Handwriting

Complete **Week 30**.

Poetry

Memorize stanzas 1–2 of "Say Not the Struggle Naught Availeth" by Arthur Hugh Clough (pronounced KLUF).