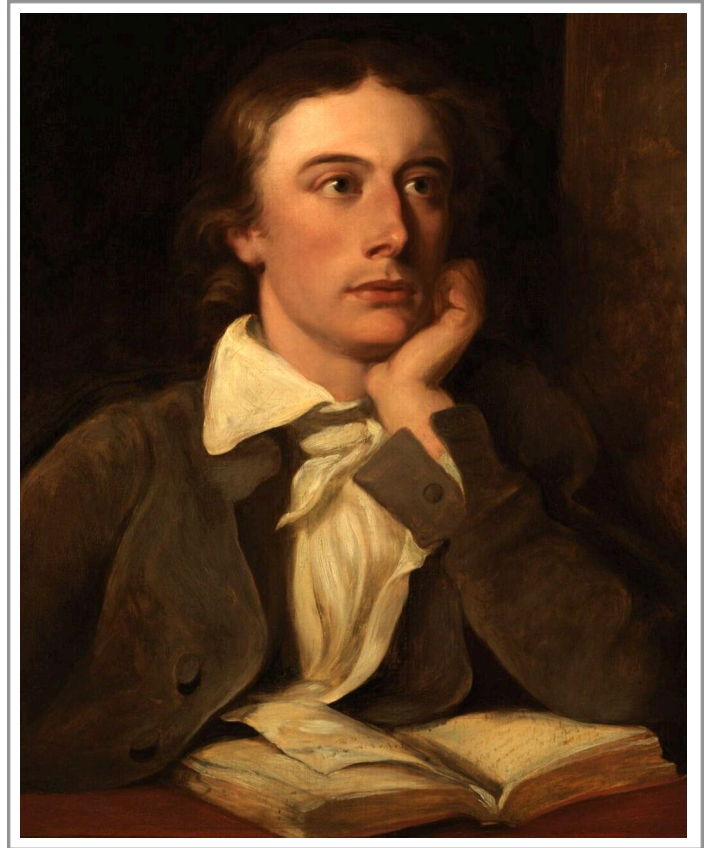


Greek Influence on English Literature Assignment 13

- *reading.* Read “Ode to a Grecian Urn,” “Ode to Psyche” and “Ode to Melancholy.” We will be going over all four odes (including “Ode to a Nightingale”) in detail in our next lesson.
- *writing.* Finish writing your personal narrative. Be sure to follow the format that I gave you on the last assignment sheet; also, remember the writing elements that we talked about in class: the importance of the title, establishing the tone and theme in the introduction, using metaphors, making a *story* with a protagonist and antagonist, etc.
- *Oedipus Rex.* Make sure that you have a copy of *Oedipus Rex* next week.



Long Range Assignment

Prepare to meet at my house for the *Odyssey* Project after the break.