

## B is for Bear

### Assignment 21

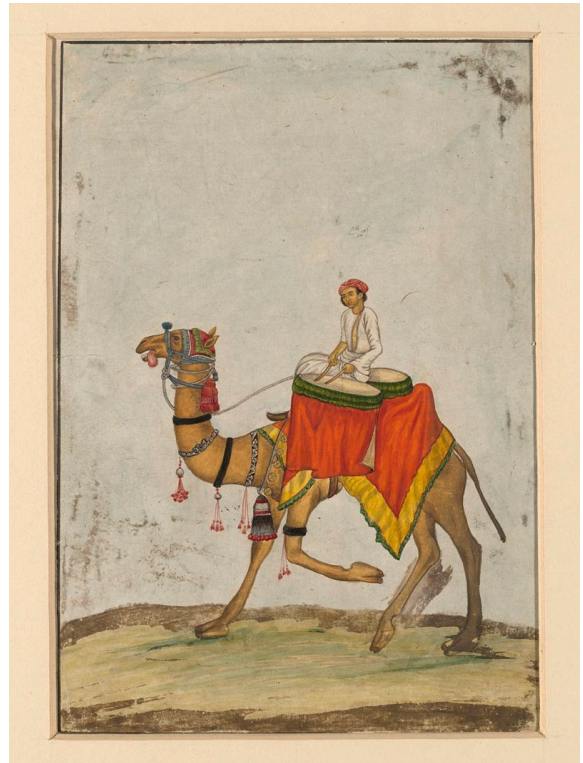
Prepare for this week's lesson by writing out any number of the following words. The *ph* letter combination makes the same sound as the letter *f*.

*phone, photo, trophy, elephant, orphan, sphere, dolphin, nephew, telephone, Philip, Ralph, Joseph, Christopher, photograph, autograph, telegraph, alphabet, prophet, Philadelphia, geography, epitaph, asphalt, phantom, triumph, biography, physician*

Your child may try to guess the meaning of the words *orphan, asphalt, phantom, triumph, and epitaph* in context. Read the following sentences and have your child choose the correct answer from the multiple choice.

Where possible, gestures may help make the meaning clear.

1. The *orphan* was adopted by a young married couple.
  - a) old man
  - b) boy or girl who has no mother and father
2. The *asphalt* was too hot for us to play basketball in our bare feet.
  - a) stuff used to make roads
  - b) ball
3. The story talked about a house haunted by *phantoms*.
  - a) dust bunnies
  - b) ghosts
4. The sports fans celebrated their team's *triumph* in the game.
  - a) victory
  - b) loss
5. Can you read the old marble *epitaph*?
  - a) a book



b) writing on a tombstone

- Complete Lesson 21 in your *B is for Bear* textbook, volume 2.
- Complete Lesson 21 of your handwriting book.
- Students should write out Dictation 21, found at the bottom of the page. Parents should be writing misspelled words down on the dictation page and going over it.
- Jacqueline Woodson. E. B. Lewis, illustrator. *Each Kindness*. Nancy Paulsen Books, 2012. A girl learns with regret how important it is to be kind.
- Memorize Stanza 3 of Emily Dickinson's poem "In the Garden."

#### DICTATION

#### EXERCISE A

Rick was an orphan.

Philip took a photo of the elephant.

Joseph has a black phone.

Christopher, see the dolphin!

His nephew has a photo of the trophy.

#### EXERCISE B

Philadelphia is a big city.

Ralph lives in Philadelphia.

Can the boy write out the alphabet?

Will he take a photograph of the lake?

Did they play ball on the asphalt?